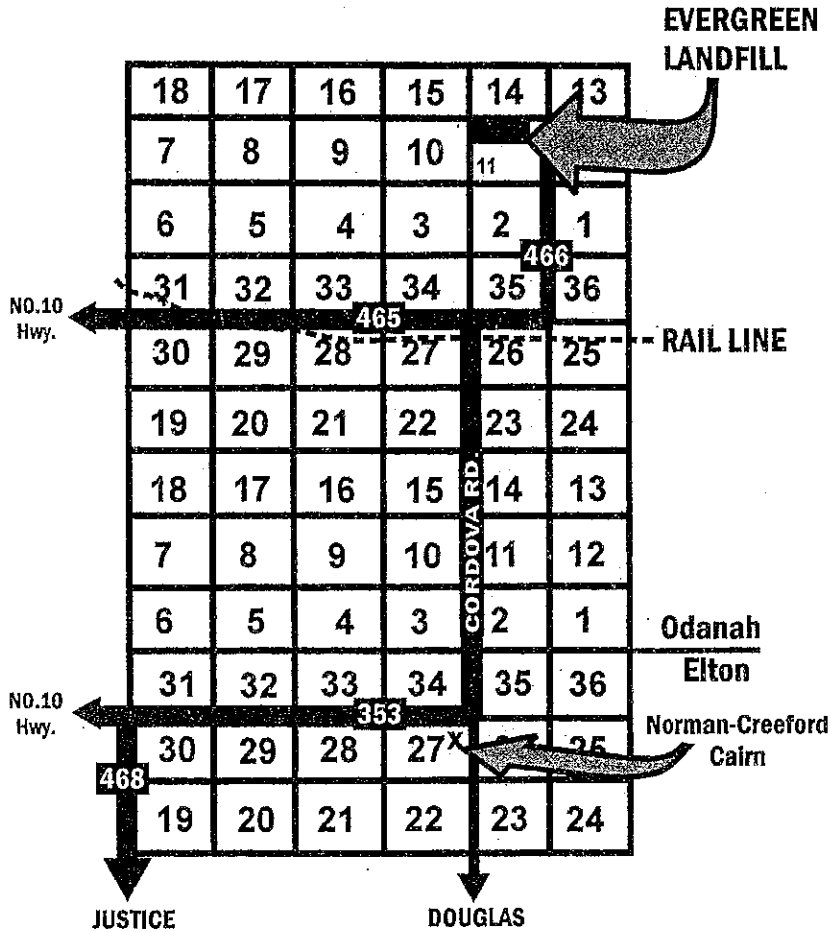


Evergreen Environmental Technologies Inc: 867-7161
 NE 11-14-17 W (on PR #466 4 KM south of Hwy #16)

Hours of Operation (summer 2011):
 Monday to Friday 8:00 am to 4:00 pm
 Saturday 8:00 am to 3:00 pm



Directions from No. 10 & PR 353
 East on PR 353 for 10 miles (to Douglas/Cordova Road)
 North on Cordova Road for 6 miles to PR 465
 East on PR 465 for 1 mile to PR 466
 North on PR 466 for 3 miles to Landfill Site